

Spring into Gardening

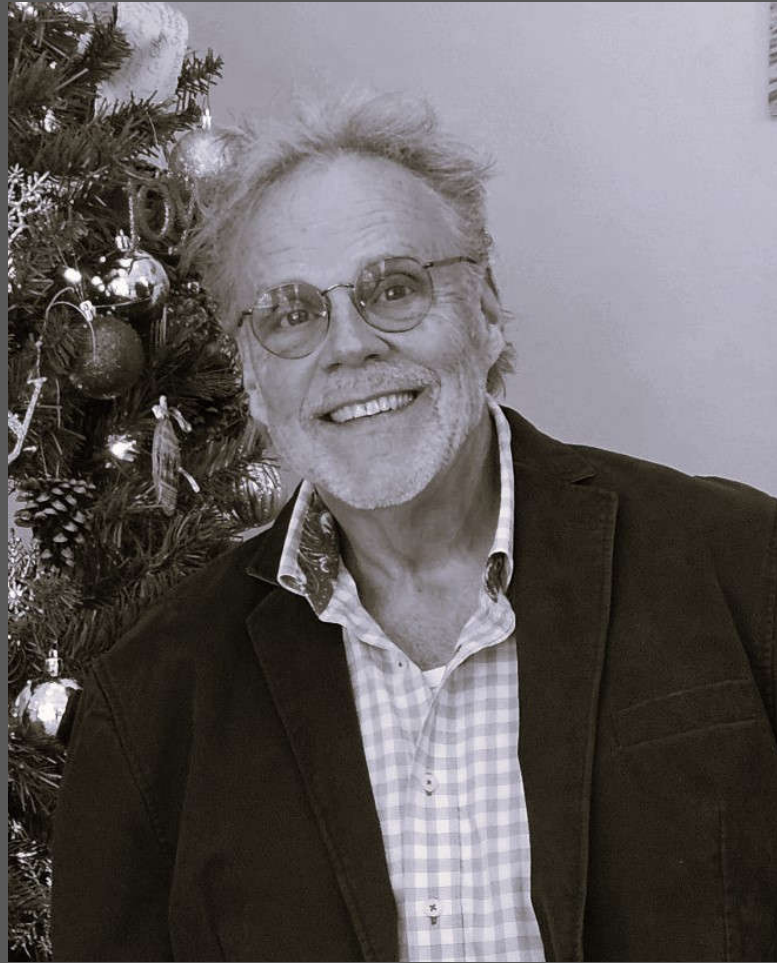
with
Daryl Wood

Sponsored by: VA Gardens LLC

Copyright © 2024

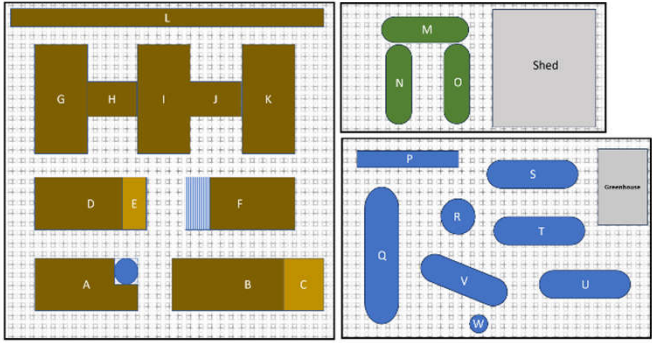


forethought
rather than
hindsight



Daryl Wood has 40+ years of project planning, landscape design/construction, and organic farming/gardening experience. He is a corporate certified Project Manager, professional gardener, published author, classroom instructor, garden coach, and the winner of the 2018 Central Virginia Iris Show. His horticulture education is through Virginia Tech, Virginia Cooperative Extension, related online courses, and personal applications. He aspires to help people reach their gardening goals and find happiness in their botanical pursuits. He and his wife Laura live in Henrico County, Virginia, and have a passion for homegrown organic fruits and vegetables.

W



S



A garden is a planned space, usually outdoors, set aside for the cultivation, display, and enjoyment of plants and other forms of nature. (Wikipedia)



Gardens don't appear naturally. They are created and maintained by people.



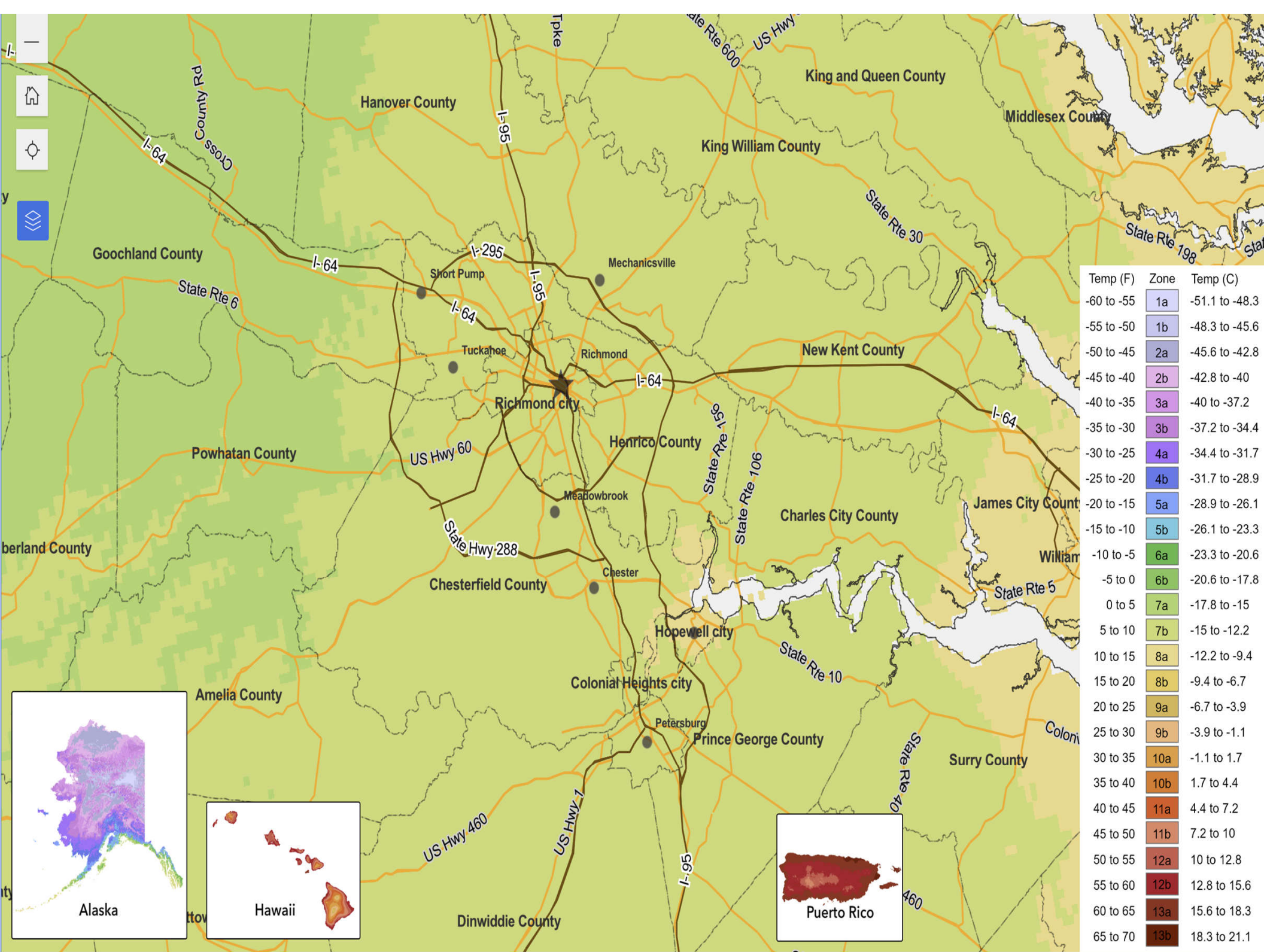
MAINTAIN

BUILD

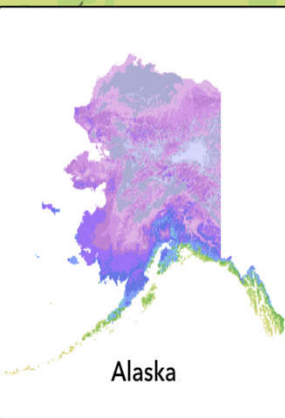
PLAN

EFFORT & \$\$\$





Temp (F)	Zone	Temp (C)
-60 to -55	1a	-51.1 to -48.3
-55 to -50	1b	-48.3 to -45.6
-50 to -45	2a	-45.6 to -42.8
-45 to -40	2b	-42.8 to -40
-40 to -35	3a	-40 to -37.2
-35 to -30	3b	-37.2 to -34.4
-30 to -25	4a	-34.4 to -31.7
-25 to -20	4b	-31.7 to -28.9
-20 to -15	5a	-28.9 to -26.1
-15 to -10	5b	-26.1 to -23.3
-10 to -5	6a	-23.3 to -20.6
-5 to 0	6b	-20.6 to -17.8
0 to 5	7a	-17.8 to -15
5 to 10	7b	-15 to -12.2
10 to 15	8a	-12.2 to -9.4
15 to 20	8b	-9.4 to -6.7
20 to 25	9a	-6.7 to -3.9
25 to 30	9b	-3.9 to -1.1
30 to 35	10a	-1.1 to 1.7
35 to 40	10b	1.7 to 4.4
40 to 45	11a	4.4 to 7.2
45 to 50	11b	7.2 to 10
50 to 55	12a	10 to 12.8
55 to 60	12b	12.8 to 15.6
60 to 65	13a	15.6 to 18.3
65 to 70	13b	18.3 to 21.1



Two Planting Seasons



Spring/Summer

February - May

June - September

Summer/Fall



Crop	Spring			Fall			Soil pH (range)
	Start Seedlings	Transplant Seedlings	Direct sow seeds	Start Seedlings	Transplant Seedlings	Direct sow seeds	
Asparagus	n/a	Mar 10 - Mar 25	n/a				6.0 - 8.0
Beans	n/a	n/a	Apr 24 - May 22	n/a	n/a	Jun 29 - Jul 29	6.0 - 7.5
Beets	n/a	n/a	Feb 28 - Mar 13	n/a	n/a	Jul 29 - Sep 12	6.0 - 7.5
Broccoli	Feb 14 - Feb 28	Mar 27 - Apr 10	n/a	May 18 - Jul 2	Jun 29 - Aug 13	n/a	6.0 - 7.0
Brussel Sprouts	Feb 14 - Feb 28	Mar 27 - Apr 10	n/a	May 18 - Jul 2	Jun 29 - Aug 13	n/a	6.0 - 7.5
Cabbage	Feb 14 - Feb 28	Mar 27 - Apr 10	n/a	May 18 - Jul 2	Jun 29 - Aug 13	n/a	6.0 - 7.5
Cantaloupe	n/a	n/a	Apr 10 - Apr 24	n/a	n/a	Jun 14 - Jun 29	6.0 - 6.5
Carrots	n/a	n/a	Mar 13 - Apr 10	n/a	n/a	Jul 14 - Sep 12	5.5 - 7.0
Cauliflower	Feb 14 - Feb 28	Mar 27 - Apr 10	n/a	May 18 - Jul 2	Jun 29 - Aug 13	n/a	5.5 - 7.5
Chard	n/a	n/a	Mar 13 - Mar 27	n/a	n/a	Jun 29 - Sep 12	6.0 - 6.8
Collards	Feb 14 - Feb 28	Mar 27 - Apr 10	n/a	Jun 14 - Jul 29	Jul 14 - Aug 28	n/a	6.5 - 6.8
Corn	n/a	n/a	Apr 24 - May 8	n/a	n/a	Jun 29 - Jul 14	5.5 - 7.0
Cucumbers	n/a	n/a	Apr 24 - May 8	n/a	n/a	Jun 29 - Jul 14	5.5 - 7.5
Eggplants	Feb 14 - Feb 28	Apr 24 - May 8	n/a	May 3 - May 18	Jun 14 - Jun 29	n/a	6.0 - 7.0
Garlic				n/a	n/a	Jul 29 - Sep 12	5.5 - 7.5
Gourds, Squash and Pumpkins	n/a	n/a	Apr 24 - May 8	n/a	n/a	May 30 - Jun 29	5.5 - 7.5
Kale	Feb 14 - Feb 28	Mar 27 - Apr 10	n/a	May 18 - Jul 2	Jun 29 - Aug 13	n/a	6.0 - 7.5
Kohlrabi	Feb 14 - Feb 28	Mar 27 - Apr 10	n/a	May 18 - Jul 2	Jun 29 - Aug 13	n/a	6.0 - 7.5
Lettuce	Feb 14 - Feb 28	Mar 13 - Apr 10	Mar 13 - Apr 10	Jul 14 - Aug 13	Aug 13 - Sep 12	Aug 13 - Sep 12	6.0 - 7.0
Mustard	Feb 14 - Feb 28	Mar 27 - Apr 10	n/a	n/a	n/a	Aug 13 - Sep 12	5.5 - 6.8
Okra	n/a	n/a	Apr 24 - May 8	n/a	n/a	May 30 - Jun 29	6.5 - 7.0
Parsley				May 30 - Jul 14	Jul 14 - Aug 28	n/a	6.0 - 7.0
Onions	Feb 7 - Feb 14	Feb 24 - Mar 25	n/a	n/a	n/a	Sep 12 - Sep 22	6.0 - 7.0
Peas (English)	n/a	n/a	Feb 24 - Mar 25	n/a	n/a	Jul 14 - Aug 13	6.0 - 7.5
Peas (Southern)	n/a	n/a	Apr 24 - May 22	n/a	n/a	May 30 - Jun 29	6.0 - 7.5
Peas (Sugar Snap)	n/a	n/a	Feb 24 - Mar 25	n/a	n/a	Jul 14 - Aug 13	6.0 - 7.5
Peppers	Feb 14 - Feb 28	Apr 24 - May 8	n/a	May 8 - May 23	Jun 19 - Jul 4	n/a	5.5 - 7.0
Potatoes	n/a	n/a	Feb 24 - Mar 25	n/a	n/a	Jul 14 - Aug 13	4.5 - 6.0
Radishes	n/a	n/a	Mar 10 - May 8	n/a	n/a	Aug 13 - Sep 12	6.0 - 7.0
Spinach	Feb 14 - Feb 28	Mar 27 - Apr 10	Mar 10 - Apr 10	Jun 29 - Aug 13	Jul 29 - Sep 12	Jul 29 - Sep 12	6.0 - 7.5
Sweet Potatoes	n/a	Apr 24 - May 15	n/a				5.5 - 6.0
Tomatoes	Feb 14 - Feb 28	Apr 24 - May 8	n/a	May 8 - May 23	Jun 19 - Jul 4	n/a	5.5 - 7.5
Turnips				n/a	n/a	Aug 28 - Sep 27	5.5 - 7.0
Watermelon	n/a	n/a	Apr 24 - May 8	n/a	n/a	May 30 - Jun 29	5.5 - 6.5



Garden Brainstorming



a. Requirements



b. Schedule

c. Budget



Considerations

- Participants
- Locations
- Structures
- Tools
- Soil preparations
- Water sources
- Seeds/plants
- Pest controls



pH N - P - K





**I need
options**

Given what I currently know,

- I need to do more reseach.
- Raised beds or containers are my best option, because my soil quality is poor.
- I don't have enough \$\$ to do everything I'd like to do right now, so I need to implement my garden plan over a longer period of time.
- I need to have some trees removed from my property because I don't have sufficient sunny areas.





VAGARDENS.INFO

VA



GARDENS LLC

VAGARDENS.INFO



vagardensllc@gmail.com

Spinning Wheel

